

LUBExpert®



Proper bearing lubrication with ultrasound advisor



FS 534337



EMS 534333



OHS 544208



AB 1564



LBU-297/07-21



Ecol belongs to the GREEN DOT system created by Hilti and partners for the development of selective waste collection in Poland.



Industrie Service WHG EQ 2247480



Poor greasing practices are a leading cause of bearing failure. Less than 40% of bearings will last long enough to deliver their engineered value and over or under lubrication is most often to blame.

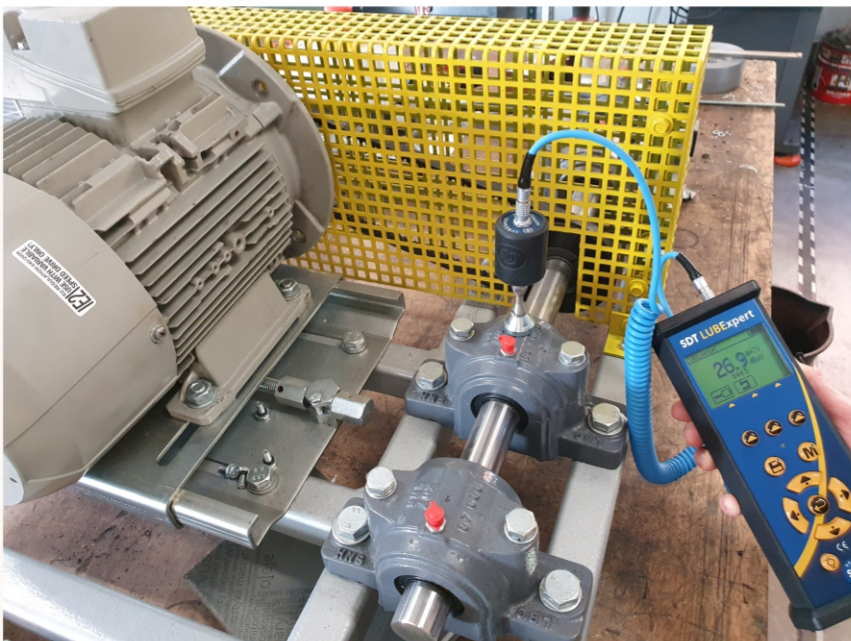
Many lube departments re-grease on a wasteful calendar-based schedule. But, this leads to over and under greased bearings that fail to deliver their engineered value.

Grease reduces friction in bearings. Less friction means longer life. Our ultrasound advisor - LUBExpert - inform when friction levels increase, guides you during re-lubrication, and prevents over and under lubrication.



Complete ultrasound solution to manage your acoustic lubrication program and ensure you GREASE BEARINGS RIGHT.

Ultrasound helps use the right lubricant at the right location using the right intervals and the right quantities while receiving the right indication of a task well done including bearing status. Ultrasound solution help to manage an acoustic lubrication program and ensure you GREASE BEARINGS RIGHT.



Dynamic Analysis

LUBExpert Dynamic delivers advanced analysis of bearing condition. During grease replenishment, dynamic data is captured in the background. These outcomes are fed to the condition monitoring team to help assess real-time bearing condition.



LUBExpert tells us when to grease... and when to stop.

Grease reduces friction in bearings. Less friction means longer life. LUBExpert alerts you when friction levels increase, guides you during re-lubrication, and prevents over and under lubrication.

LUBExpert Dynamic connects the Lube Team with the ConMon Team.

LUBExpert Dynamic delivers advanced analysis of bearing condition. During grease replenishment, dynamic data is captured in the background. These outcomes are fed to the condition monitoring team to help assess real-time bearing condition.

LUBExpert Features



Bearing Database

LUBExpert maintains a database of all your assets including bearing type and dimensions.



Guided & Free Modes

Lube techs can choose between "FREE" and "GUIDED" modes to grease bearings right.



Shopping List

LUBExpert reminds you to bring the right grease type, gun, and quantity for the day's lube tasks.



Automation

LUBExpert removes the guesswork by automatically calculating the stabilization time between grease pumps.



Work Orders

The workflow inherent in LUBExpert restores order and discipline to your lubrication program.



System Messaging

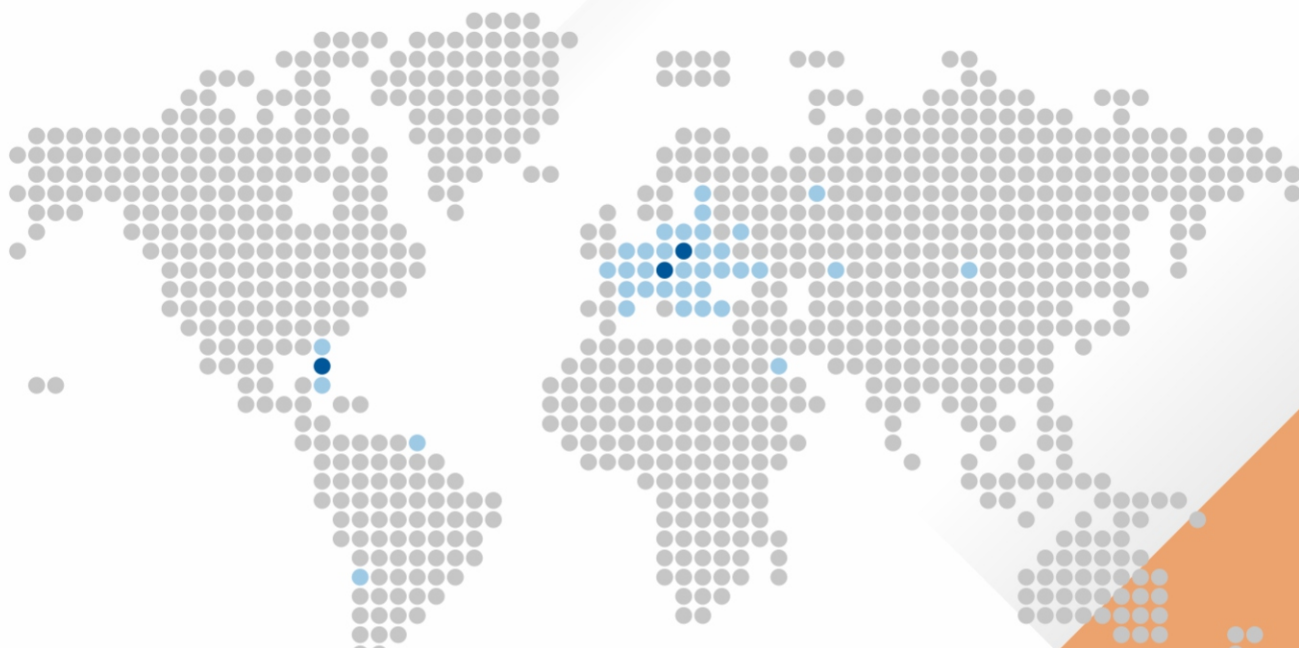
LUBExpert uses messaging to document each decision made by the lube-tech. I.E. "safety risk", "asset not in operation".



LUBExpert Dynamic

With the **Dynamic Option**, you'll reduce data collection time while increasing the efficiency and communication between the lube and condition monitoring teams.

over 30 years of Ecol's Group experience



Ecol Sp. z o.o.
ul. Podmiejska 71 A
PL 44-207 Rybnik
tel.: +48 32 739 18 30
fax: +48 32 739 18 29
e-mail: ecol@ecol.com.pl
www.ecol.com.pl